

Blaze® and Divine Cut® diamonds

by

Bez Ambar

the originator of the princess cut



  
MB

MAURICE BADLER

Where Fashion Begins

The most inspiring element  
of a diamond is its capacity  
to split light into a rainbow  
of pure vibrant colors.

When light pierces crystal  
clear matter, it blasts into  
a prism of vivid fire.

This cosmic blaze shines  
through and illuminates  
the human spirit with a  
divine sparkle.

The Blaze® and the Divine Cut®  
were designed with the sole  
obsession of capturing and  
magnifying this amazing  
phenomenon.

Bez Ambar the creator of the  
princess cut diamond  
is proud to present the

**Blaze®**  
and  
**Divine Cut®**

## Flame of Love

Flame of Love ring with a double Blaze® and pavé diamond halo.





A



B



C

## Ring of Fire™

Rose and white gold Ring of Fire with Blaze® diamonds for a round center - the ultimate halo.



A. Pendant of Fire.

B. Cushion center diamond with a pavé accented band.

C. For a fancy yellow oval diamond.

## Earrings of Fire

Earrings of Fire with Blaze® diamonds around princess centers.



A. Ring of Fire™ features our exclusive diamond halo.

B. With a Blaze® diamond band for an emerald cut center.

C. Fancy pink diamond center with rose gold pink sapphire eternity bands.



A



B



C

# Divine Cut®

The future of round diamonds.



Ring of Fire with a Divine Cut®  
center diamond.

DIVINE CUT IS A REGISTERED TRADEMARK OF BEZ AMBAR US PATENT #5156656565

Divine Cut® diamond  
bands are the perfect  
complement to a classic  
engagement ring.



Divine Cut®  
Silhouette Mounting





## Divine Cut® Diamond Bands

Magnificent Divine Cut® diamonds in your choice of all the way around or part way.

## Silvet Ring

Silvet Ring with Blaze® diamonds, featuring a heart shape diamond atop a bed of pink sapphires, framed by two pink sapphire bookend bands.





A



B



C



D



Bez Ambar's Silvet ring with Blaze® diamonds may be customized for any shape center.

- A. Pink sapphires under the center stone.
- B. With a white diamond bookend band.
- C. Amethysts under the center and two white bookend bands.
- D. Looks beautiful in blue.



## Flower of Light

Flower of Light ring with a double Blaze® and pavé diamonds halo and two delicate rose gold bands.



The Flower of Light ring may be customized for any shape diamond.

- A. With a Blaze® and pink sapphire halo framed by two pink sapphire bands.
- B. With a Blaze® and round diamond halo shown with two diamond bands.
- C. With beaded edges.





Belt of Fire ring with three elegant rows of round diamonds leading to the center stone surrounded by a belt of Blaze® diamonds.

Belt of Fire ring for (A) round, (B) oval, (C) princess, and (D) emerald cut center.



Belt of Fire



A

## Frame of Light

Frame of Light ring with a princess center and Blaze® diamonds.



There are endless possible combinations to create your unique Frame of Light ring.

A. Light Box earrings with princess center diamonds.

## Eclipse Ring

Blaze® diamonds encircle the center and round diamonds flow down the ring with black and white “panther” bookend bands.





The Eclipse ring can be customized for any shape center.

A. Eclipse Ring with a white diamond bookend band.

B. Eclipse ring with double row diamond bookend bands.

## Windows Collection

Three row Blaze® and pavé diamonds Windows band.





Windows engagement ring with Blaze® and round diamonds can be created for any diamond shape.



A



B



C



D

## Frame of Fire

Frame of Fire ring featuring a fancy pink radiant diamond with pink diamond bookend bands.



- A. With Blaze® diamonds and two “panda” bookends.
- B. With two-row diamond bookends.
- C. With “panther” bookends.
- D. With a fancy yellow radiant diamond and white diamond bookends.

## Anne Ring

Anne Ring for a round center with Blaze® and pavé diamonds.





Anne ring for a (A) princess center, (B) heart center, (C) round center, (D) oval center.

## Ascent Ring





Ascent ring with Blaze® and round diamonds for (A) round, (B) heart shape, (C) an oval shape.

## René Ring

René ring for a round diamond.





A. René ring for a princess center. B. Dome ring for a round center.  
C. Blaze® Tulip ring for a round center.

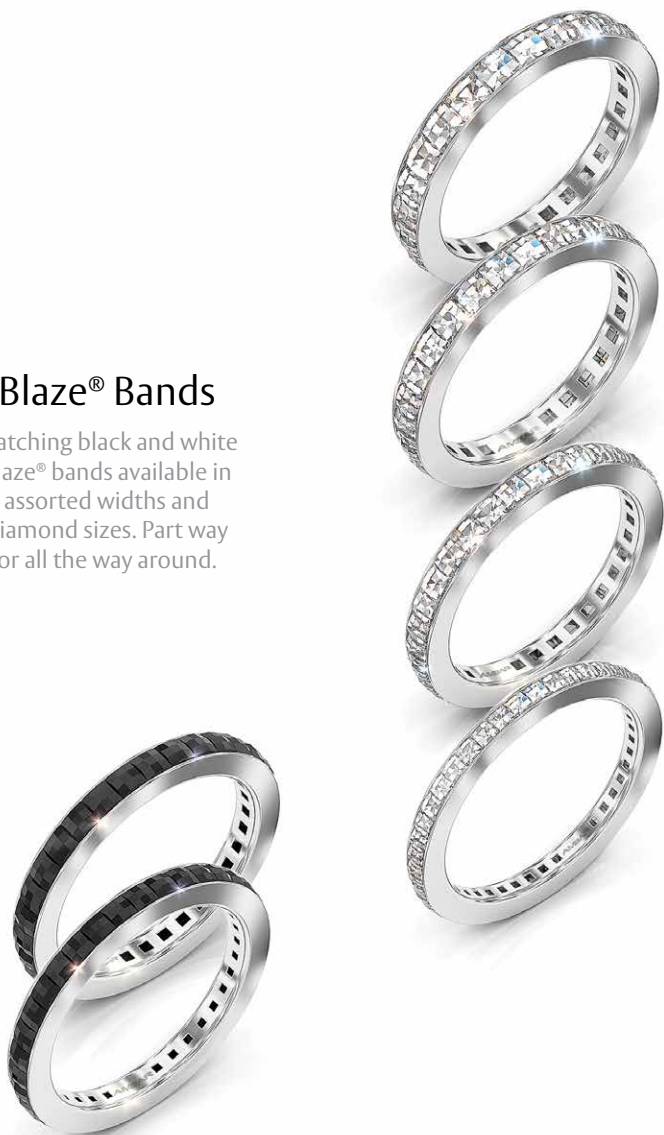
## Waterfall Ring

Waterfall Ring with Blaze® cut diamonds in rose and yellow gold eternity Blaze® bands.



## Blaze® Bands

Matching black and white  
Blaze® bands available in  
assorted widths and  
diamond sizes. Part way  
or all the way around.



## Lattice Web Ring



Lattice ring may be created for any shape diamond.

A. Lattice ring with “twinkle” bookend bands.

B. Lattice ring flanked by two “panther” black and white bookend bands.



## Paloma Blaze® Ring





Paloma Blaze® ring featuring Blaze® and round diamonds may be customized for any shape center.

## Equinox Blaze® Ring

Equinox Blaze® ring with Blaze® and pavé diamonds.





Equinox Blaze® ring for a (A) round, (B) heart shape, (C) princess, and (D) radiant center.

## Silhouette Ring





A new classic 12 prong setting created by Bez Ambar.

## Esprit Bands



## Helm Bands



Bez's unique men's Blaze® rings are available in yellow, white and rose gold.

## Diversity Collection

Oval and Blaze® diamond engagement rings and anniversary bands in white, yellow and rose gold.





## Manhattan Collection

A striking motif of Blaze® and baguette diamonds.

## Ring of Light

Ring of Light with Blaze® diamonds elevates a 6 carat round diamond to new heights.



Matching bands are available in assorted widths and diamond sizes. Part way or all the way around.

A. Light Box earrings with Blaze® diamonds surrounding princess cut diamonds.



## Eclipse Ring

Bez Ambar's Eclipse Ring of Blaze® and round diamonds is a magnificent stage to present an important round diamond.



  
**MAURICE BADLER**

485 Park Avenue (between 58th & 59th Streets)  
New York NY 10022  
Monday-Saturday 10AM-7PM  
(800) M-BADLER (800) 622-3537  
[www.badler.com](http://www.badler.com)